

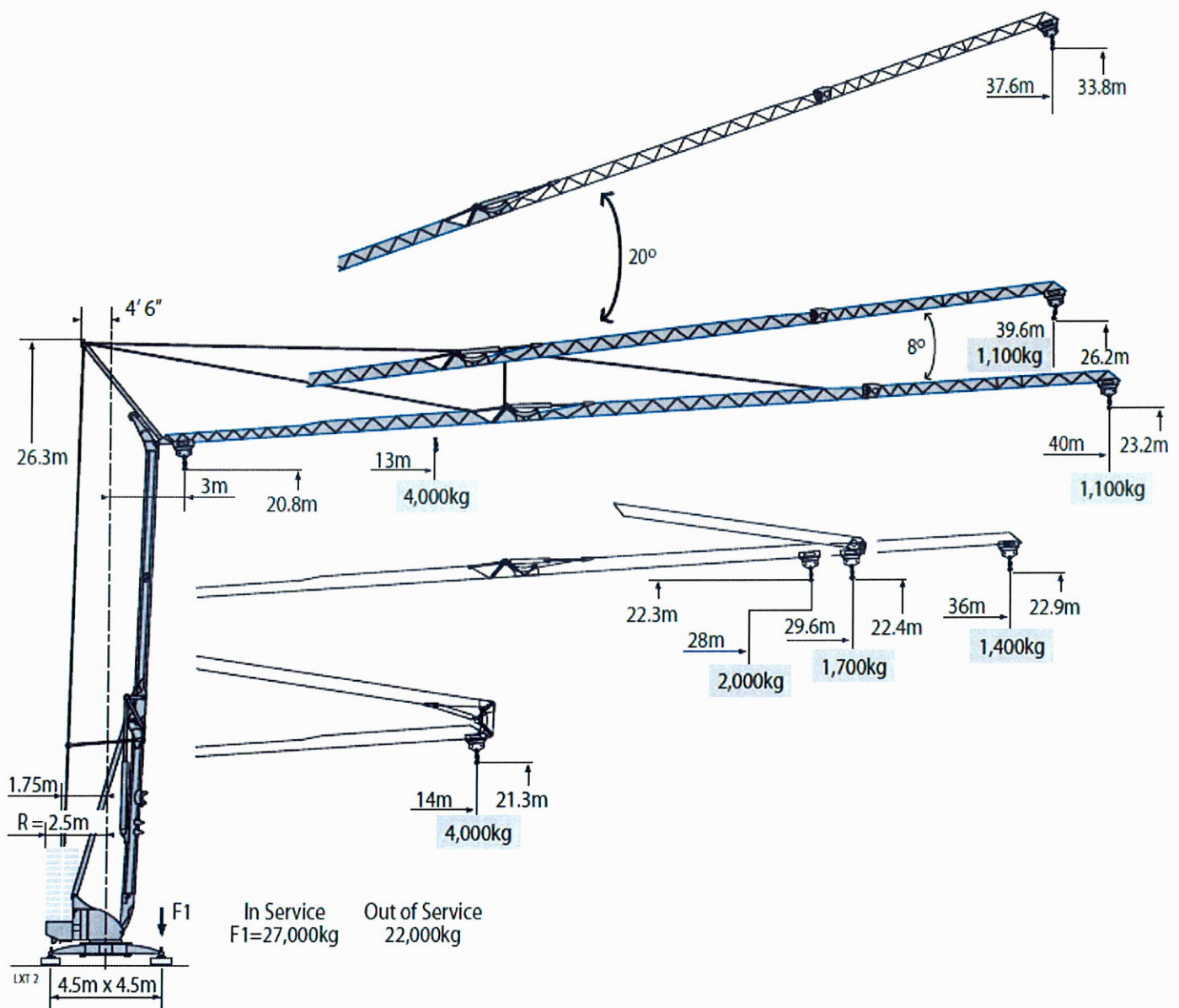


TRANSPORT – GRUE – DEMENAGEMENT INDUSTRIEL – MANUTENTION – LOCATION – ENTREPOSAGE



### Grue Tour POTAIN IGO 50

### Tableau de Charge : Flèche Principale.



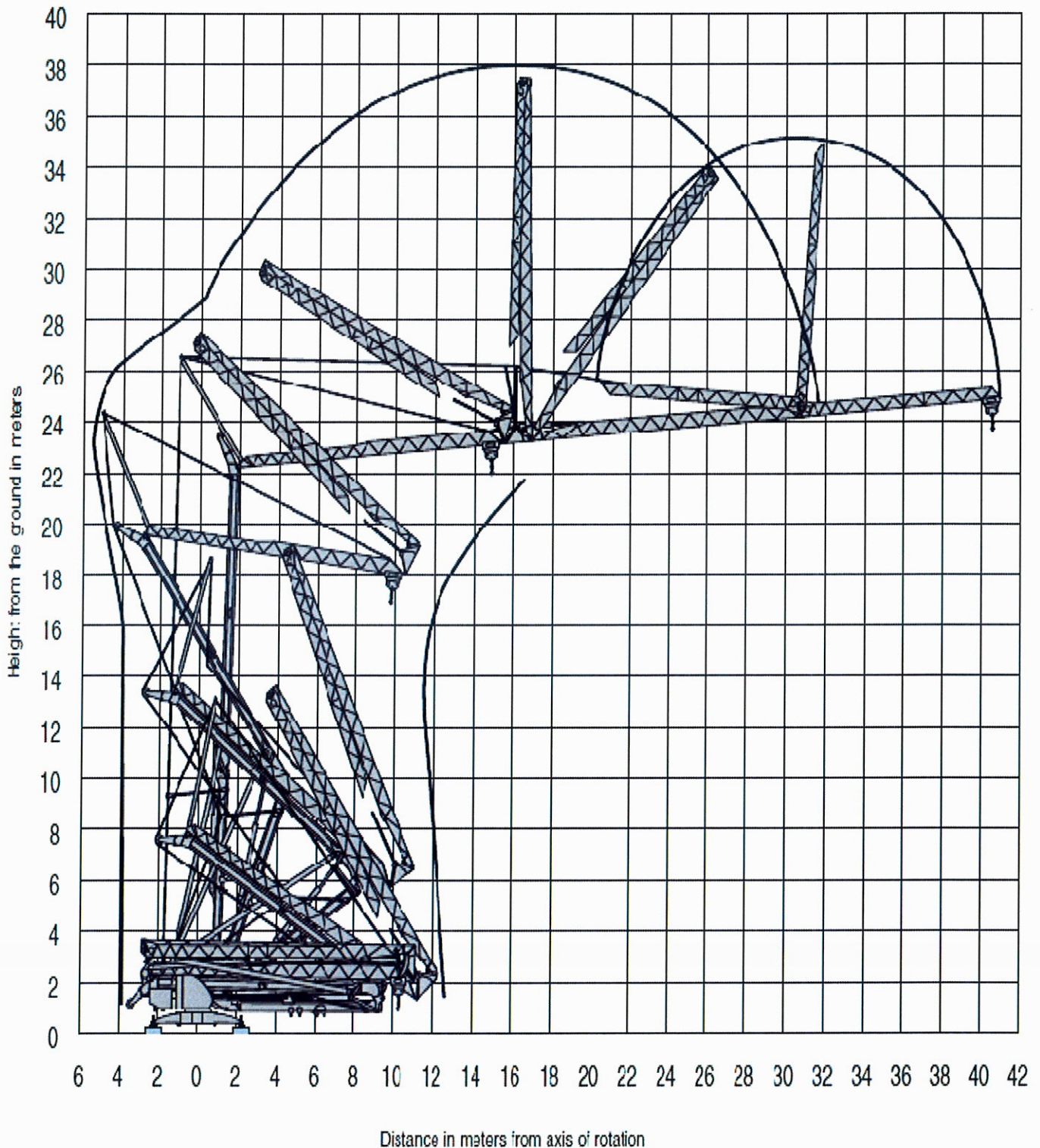
Unit Weight: 14,875 kg



TRANSPORT – GRUE – DEMENAGEMENT INDUSTRIEL – MANUTENTION – LOCATION – ENTREPOSAGE



## Déploiement de la grue.





TRANSPORT – GRUE – DEMENAGEMENT INDUSTRIEL – MANUTENTION – LOCATION – ENTREPOSAGE



## Tableau de charge : Avec bras de 40m.



**Jib Configuration: L40 with maximum hook reach of 40 m at 0°**

Hook Reach (m)	3	13	14	15	16	17	18	19	20	23	24	24.2	25	27	30	32	35	37	40
Reeving	Capacities (kg)																		
SM1	2,000	2,000	2,000	2,000	2,000	2,000	2,000	2,000	2,000	2,000	2,000	2,000	1,920	1,755	1,550	1,435	1,290	1,210	1,100
SM	2,000	2,000	2,000	2,000	2,000	2,000	2,000	2,000	2,000	2,000	1,895	1,876	1,800	1,640	1,440	1,330	1,185	1,105	1,000
DM	4,000	4,000	3,665	3,365	3,105	2,885	2,690	2,520	2,365	2,000	1,895	1,876	1,800	1,640	1,440	1,330	1,185	1,105	1,000

Maximum Hook Heights at Jib Tip: H = 23.2m  
 Maximum Hook Heights at Jib Foot: H = 20.8m

## Tableau de charge : Avec bras de 36m.



**Jib Configuration: L36 with maximum hook reach of 36m at 0°**

Hook Reach (m)	3	14.3	15	16	17	18	19	20	22	24.2	25.3	26	26	27	30	32	35	36	
Reeving	Capacities (kg)																		
SM1	2,000	2,000	2,000	2,000	2,000	2,000	2,000	2,000	2,000	2,000	2,000	2,000	2,000	1,960	1,735	1,610	1,450	1,400	
SM	2,000	2,000	2,000	2,000	2,000	2,000	2,000	2,000	2,000	2,000	2,000	1,940	1,886	1,850	1,630	1,505	1,345	1,300	
DM	4,000	4,000	3,770	3,485	3,235	3,020	2,830	2,660	2,370	2,135	2,000	1,940	1,886	1,850	1,630	1,505	1,345	1,300	

Maximum Hook Heights at Jib Tip: H = 22.9m  
 Maximum Hook Heights at Jib Foot: H = 20.8m

## Tableau de charge : Avec bras de 29.6m.



**Jib Configuration: L40 with maximum hook reach of 29.6m at 0°**

Hook Reach (m)	3	13.9	15	16	17	18	19	20	22	24.7	25	25.8	26	27	29.6
Reeving	Capacities (kg)														
SM1	2,000	2,000	2,000	2,000	2,000	2,000	2,000	2,000	2,000	2,000	2,000	2,000	1,982	1,895	1,700
SM	2,000	2,000	2,000	2,000	2,000	2,000	2,000	2,000	2,000	2,000	2,000	1,965	1,893	1,875	1,600
DM	4,000	4,000	3,655	3,375	3,135	2,925	2,740	2,575	2,295	2,000	1,965	1,893	1,875	1,790	1,600

Maximum Hook Heights at Jib Tip: H = 22.4m  
 Maximum Hook Heights at Jib Foot: H = 20.8m

## Tableau de charge : Avec bras de 28m.



**Jib Configuration: L28 with maximum hook reach of 28m at 0°**

Hook Reach (m)	3	15.7	17	18	19	20	22	23	25	26	27	28
Reeving	Capacities (kg)											
SM1	2,000	2,000	2,000	2,000	2,000	2,000	2,000	2,000	2,000	2,000	2,000	2,000
SM	2,000	2,000	2,000	2,000	2,000	2,000	2,000	2,000	2,000	2,000	2,000	2,000
DM	4,000	4,000	3,635	3,395	3,180	2,990	2,670	2,530	2,290	2,190	2,090	2,000

Maximum Hook Heights at Jib Tip: H = 22.3m  
 Maximum Hook Heights at Jib Foot: H = 20.8m